

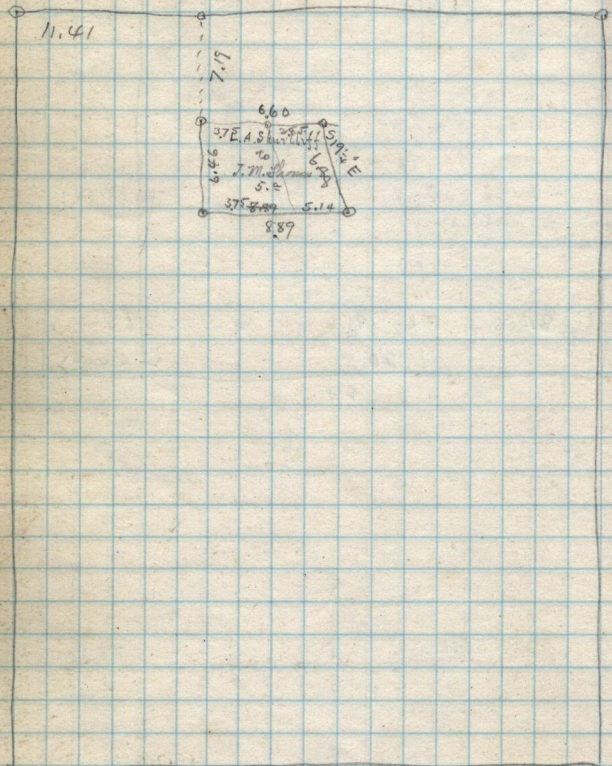
✓

Pat by Leaman A. Shurtliff.

Aug. 1st 1887

N.E. 1/4 Sec 7 T6

N.R. 1W



- Shurtliff to J.M. Thomas Dec. 9-1872 - Recd H. 187-

J.M. Thomas to W^m H. Wright - Pt. NE 1/4 Sec 7 - Beg. 15.16 ch S. 77.1

S. 11.24 ch. E. 2.85 S 19 1/4° E 6.89 ch W. 5.14 N. 6.46 to Cng. 2.58 ch

Date June 27-1873 H-539-